

# Office to let

## Titeica (142) Office Building

Bucharest, Sector 2, 142 Gheorghe Titeica Street



### Building information

Building status	Existing
Year of construction	2010
Total building area	1 800 sq m

### Commercial terms

Office space*	after login *
Parking	after login *
Service charge*	after login *
Minimum lease term	after login *
Availability	after login *

\* Asking terms for m<sup>2</sup>/month

### Location



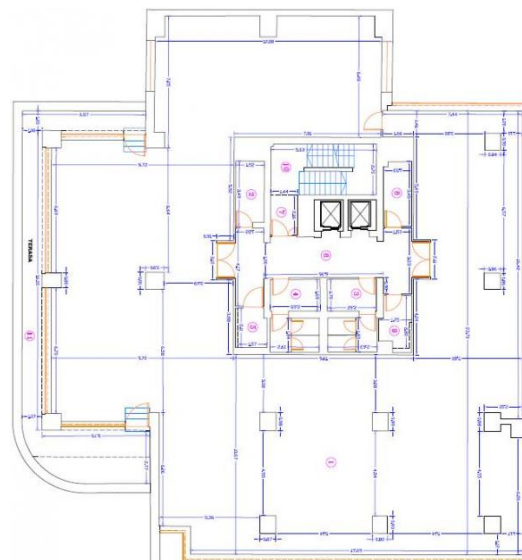
### Available space

Building completely leased

### Standard fit-Out

- |    |                   |    |              |
|----|-------------------|----|--------------|
| ⚙️ | Air conditioning  | 🏠  | Reception    |
| ≡  | Raised floor      | 🛡️ | Security     |
| 🏠  | Suspended ceiling | @  | Fibre optics |
| 📞  | Telephone cabling |    |              |
| 💻  | Computer cabling  |    |              |
| ⚡  | Power cabling     |    |              |
| 🚒  | Smoke detectors   |    |              |
| 🌊  | Carpeting         |    |              |

### Typical floor plan



### Public transport

Metro: M1

Bus: 330, 335

Tram: 5

Contact



+40 21 302 3400

More information